

NORWICH WOMEN'S CLUB

Community Service Since 1907

NOVEMBER 2013

PRESIDENT'S MESSAGE

So...are you over 50? Me, too! Were you offended, or vaguely uneasy, about the announcement of a recent "Wine & Apps" gathering specifically for women under 50? Well, if so, you weren't alone – we seem to have touched a nerve! Believe me, there was no intent to offend anyone – or to exclude anyone from ANY Norwich Women's Club events.

So...are you under 50? The Norwich Women's Club wants YOU!! And that's why we're experimenting with ways to attract "younger" (don't you just love that 50 is young!) members to the club. It's difficult for women with young children or full-time jobs to join us for our monthly "Coffee & Conversation" morning gatherings at the Norwich Inn. And yet it's vital that we continue to attract new – both "young" and "mature" – members to the Club so that we can continue the fundraisers that contribute so much to the Norwich community. If you have any ideas, or thoughts, please let me know.

And speaking of fundraising, the **Nearly New Sale** brought in record receipts in October (second only to the extraordinary post-Irene sale) – kudos to Elaine Waterman and her army of volunteers! Nearly New Sale net proceeds fund scholarships for post-secondary (usually college) study for Norwich residents who are identified by VSAC (the Vermont Student Assistance Corp.) as deserving of assistance.

I'm looking forward to seeing many of you at the **Holiday Party on Thursday, December 5** from 5 to 7 at the Norwich Historical Society. Watch for your email invitation! As has been our custom for several years, we are coordinating with the merchants in Norwich Square who hold their Holiday Open House from 4 to 8 on the same evening. So plan on some partying and some shopping!

And just another reminder to keep your eye on our website at www.norwichwomensclub.org for up-to-date info on Club activities. Like us on Facebook too!

Debby

SAD FAREWELL

It is with great sadness that we report the passing of Ardis Close on October 6th.

Our thoughts are with her family.

NWC Calendar

NWC Holiday Gathering

Thursday December 5th

5:00-7:00pm

Norwich Historical Society

Coffee and Conversation

(no Coffee in December due to Holiday Gathering in the same week)

2014: Monday January 6th

10:00-11:00am, Norwich Inn

NWC Board Meetings

Norwich Public Library

Mondays 6:30 pm

(no meeting in December due to Holiday Party)

January 13

February 10

March 10

April 7

May 12 (Board Dinner)

* * * * *

MEMBERSHIP

We welcome warmly our newest members:

Celina Barton, Nancy Fontaine, Ingeborg Hazewinkel, Jennifer Langhus, Nancy J. McNulty, Pamela Miles, Susan Sorensen, Ingrid Svensborn, Beth Reichert, Tracy Zuckerman.

Do you know anyone who is interested in becoming a member? She will find more information on our website – www.norwichwomensclub.org.

Sophia Crawford
Membership Coordinator

NORWICH WOMEN'S CLUB

Community Service Since 1907

NOVEMBER 2013

Fall 2013 50th Anniversary Sale

HUGE SUCCESS

The shoppers have dispersed, the tables returned to the Tracy Hall closet, the hangers sorted, stacked and packed, and the racks taken apart while the mirrors were wrapped up. All was hauled over to the Nyes' barn next to the Congregational Church for storage until the spring 2014 sale window (April 30 - May 4). The clean-up crew did a fantastic job getting the gym back to normal in record time.

The NNS just keeps growing each year. Many thanks to Sue Kaufman and Debby Hall for helping Nearly New treasurer Cheryl Lindberg tally up each day's sale and get the money to the bank. The gross sales totaled \$30,785!!!! This was our second biggest sale in fifty years! (Hurricane Irene in August 2011 was responsible for that fall's record sale of over \$35,000.) Consignment checks will be mailed 4-6 weeks after the sale closes.

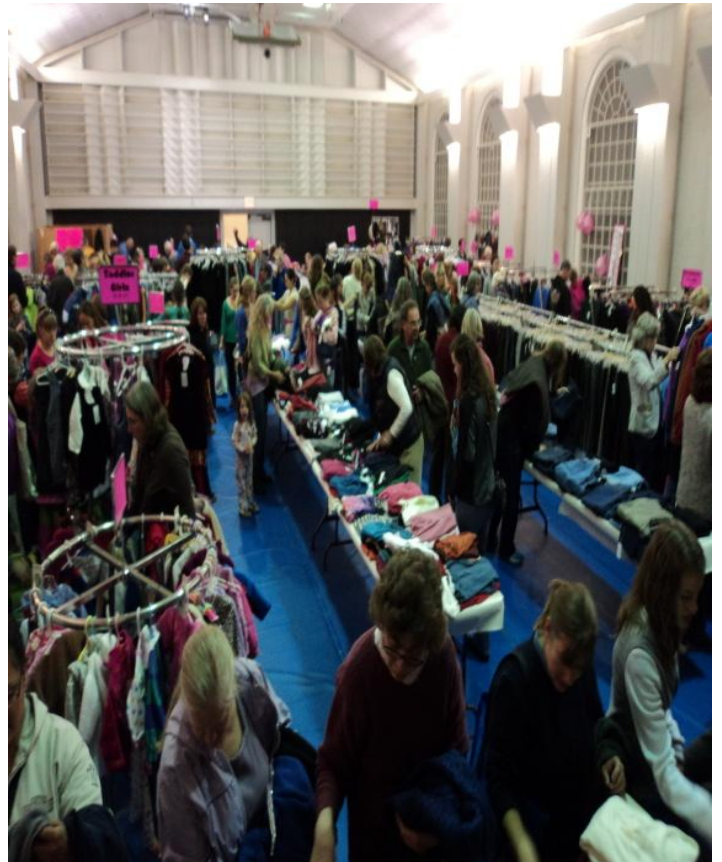
The Upper Valley Haven was again the recipient of clothing left over after the bag sale. The good news is that we didn't have much left after the bag sale, yet we still managed to pack up great clothing for men, women and children to fill out the Haven's winter closet needs. The Haven is so appreciative of our seasonal donations.

I shout out many thanks to Sophia Crawford and Debbie Carter for rallying the numerous volunteers who give of their time sale after sale to support all aspects of this community event. It definitely takes a village....See the last two pages for the list of volunteer names and an assortment of photos.

My personal thanks to all the volunteers, consignors and shoppers for supporting the Nearly New Sale which benefits the Norwich Women's Club Scholarship Fund.

Most appreciatively,

Elaine Waterman, Nearly New Sale Chair



Celebrating Fifty Years of the Nearly New Sale

Thanks to the brainstorming and follow-through of the 50th Year Celebration Committee, the Library showcase, the fall meeting at Alison May's in early October, the colorful balloons, decorations, scholarship information signs and the volunteer refreshment area were executed by Karen Ward (showcase designer *extraordinaire*), Annette Brown, Gail Sanders, Debbie Carter, Corlan Johnson and Arline Rotman. Their time, talent and energy are much appreciated.

Elaine Waterman



NORWICH WOMEN'S CLUB

Community Service Since 1907

NOVEMBER 2013

Recipes of the month:

For your cooking, eating or reading pleasure, we are bringing you tasty recipes we have enjoyed at our self-catered events.

If you tasted Mary Ann Holbrook's melt-in-your-mouth delicious lemon mousse at our annual meeting, you will be delighted to have her recipe. It comes from *At Blanchard's Table* cookbook. We were originally told that it was from Ina Garten's cookbook so I followed Ina's lemon mousse recipe. I can attest that it is equally good. You can choose either one and you can't go wrong.

Annette Brown generously supplied delicious goodies for the workers at the Nearly New Sale. My favorite was the ginger-molasses cookie with white chocolate chips. She was happy to share her recipe with us.

Arline Rotman

Light-As-a-Cloud Lemon Mousse

1 cup sugar

¾ cup freshly squeezed lemon juice

6 large egg yolks and 2 large eggs

1 TBS freshly grated lemon zest

1½ cups heavy cream

Assorted berries and whipped cream, for serving

In the top of a double boiler over simmering water, combine the sugar, lemon juice, egg yolks, eggs and lemon zest. Cook, whisking constantly, until a thermometer reads 160° F. Transfer to a bowl, cover with plastic wrap and chill.

When the lemon mixture is cold, whip the cream until soft to medium peaks form. Gently fold a quarter of the whipped cream into the lemon mixture to blend, and then fold in the remaining cream.

Chill in a large serving bowl, or spoon into individual glasses or bowls. Garnish with berries and sweetened whipped cream.

Soft Ginger-Molasses Cookies w/White Chocolate Chips

makes about 36 cookies

Preheat oven - 350 degree

1cup (2sticks) butter at room temperature

1 cup white sugar, plus extra for coating dough balls

½ cup molasses

2 TBS canola oil

1 tsp vanilla

2-¼ tsp baking soda

1 tsp salt

1 tsp ground ginger

1 ¼ tsp cinnamon

2 large eggs

3½ cups all-purpose flour

1½ cups white chocolate chips

Line baking sheets with parchment paper. Using electric mixer cream together butter and sugar until creamy. Add molasses, oil, vanilla, baking soda, salt and spices, and beat until well combined. Add eggs one at a time beating well after each addition. With mixer on low gradually add the flour. Do not overmix. Stir in white chocolate chips by hand. With a tablespoon scoop out dough and roll into a ball, then roll in extra granulated sugar. Place on cookie sheet about 2" apart. Bake for 8 to 10 mins. Remove from oven but allow cookies to sit on pan for 5 minutes before transferring to wire rack.

NORWICH WOMEN'S CLUB

Community Service Since 1907

NOVEMBER 2013

NEARLY NEW SALE VOLUNTEERS

These volunteers generously gave of their time to fold leaflets, affix labels, prepare pre-consignment packets, file paperwork, send out emails, make phone calls, write postcards, inspect, hang, fold, write lists and tags, cut off tags, bag clothes, give change, count tags, match tags, calculate consignor checks. We cannot thank them too often. Without them, we know there could not have been a sale.

Elaine Waterman

Claudia Adami, Betty Ann Aldrich, Ana Paula Alexandrescu, Diane Ames, Mary Anderson, Nancy Anderson, Sandie Anderson, Jennifer Ankner-Edelstein, Tucker Arbogast, Kathy Avery, Beverly Barton, Marguerite Bauch, Ghislaine Belair, JoAnn Berns, Licia Berry-Berard, Christi Berube, Carole Bibeau, Sarah Bibeau, Jody Harvey Biddle, Debbie Birenbaum, Janna Borg, Lydia O.Bos, Amy Bosco, Christine Bothe, Sally Boyle, Isabelle Bradley, Megan Brendel, Annette Brown, Charlie Buell, Judy Butler, Thera Callahan, Debbie Carter, Nancy Carter, Suzanne Champlin, Devra Chicoine, Ann Christiano, Sheila Clark-Ferris, Dorothy H. Cloud, Danielle Cohen, Wendy Cole, Onita Connington, Sheila Conrad, Laura Cooley, Sue Cooley, Mary Clare Cooper, Fred Crawford, Sophia Crawford, Candace Crosby-Rogers, Walli Croteau, Madeline Dalton, Ali Davis, Marcia Davis, Stephanie Davis, Marilyse de Boissezon, Nancy H. Dean, Carole Dempsey, Pat Dempsey, Rosalie Denike, Ruth Dixon-Vestal, Martha Drake, Annah Dupuis, Lee Emerson, Alanya Engtrakul, Cindy Faughnan, Erica Faughnan, Manuela Fonseca, Nancy Fontaine, Clare Forseth, Keith Fossett, Carolyn Frye, Milt Frye, Carolyn Fryer, Sally Gage, Mila Gao, Anne Garrigue, Jenny Gelfan, Sugar Genereaux, Janet Gerety, Linda Glasgo, Nancy Golder, Deirdre Goodrich, Michael Goodrich, Mary Lee Goodwin, Beverly Gorham, Marilyn Grassi, Ginny Gray, Linda Gray, Lizzie Gray, Abbie Griggs, Dianne Griggs, Peter Griggs, Liz Guest, Martina Hackett, Susan Haedrich, Debby Hall, Laurie Halpern, Susie Hastings, Ellen Haun, Linda Hazard, Cheri Fraser Henry, Cheryl Herrmann, Geraldine Higgins, Mary Ann Holbrook, Ellie Huke, Dana Ireland, Kylee Eliza Ivany, Antoinette Jacobson, Annie Janeway, Christina Joanis, Corlan Johnson, Jaye Pershing Johnson, Sue Kaufman, Hannah Kearney, Kristen Kelliher, Elaine Kennedy, Joanne Kent, Mayumi Kimura, Karen Kniffin, Joyce H. Knights, Kyle Koehler, Anne Kolkin, Maryann Kotowski, Jean Krieg, Karen Kuntne-Woodward, Carole Lang, Jean Lawe, Bonnie Lawlor, Mary Drake Layton, Nancy Lesourd, Linka Lewis, Cheryl Lindberg, Carol Loveland, Suzanne Lyons, Renie MacArthur, Phyllis MacDonald, Lorinda MacLeod, Jennifer MacMillen, Betsy Maislen, Alison May, Lisa McCabe, Isabel McCarthy, Penny McConnel, Mary McKenna, Melanie Michel, Fifi Milchman, Lisa Milchman, Marisa Miller, Pam Mobilia, Heidi Lang Moran, Amy Nartowicz, Elizabeth Nelson, Jill Niles, Chelsea Palmer Nolan, Teresa Oden, Jane Officer, Annie Olsen, Nancy Osgood, Mary K. Otto, Barbara Payson, Carolee Perry, Judith Pettingell, Cindi Piper, Sue Pitiger, Dominica Plummer, Mary Poulson, Sylvia Provost, Heidi Reiss, Beth Reynolds, Michael Reynolds, Patti Rich, Libby Robbie, Heidi Rogers, Michie Rogers, Arline Rotman, Janet L. Saint Germain, Darlene Saler, Gail Kiley Sanders, Holly Sateia, Edye Scheier, Paula Schleicher, Nan Schwartzman, Debby Scribner, Eileen Shaevel, Fran Sherley, Alida Shriber, Mimi Simpson, Pauline Smith, Sydney E. Smith, Jenny Snyder, Joan Sorenson, Susan Spademan, Tricia Spellman, Marieke Sperry, Cindy Stableford, Cynthia Stadler, P.J. Stanwood, Peter Stanzel, Amy Stringer, Melinda Stucker, Barbara Sydney, Diane Tensen, Hetty Thomae, Veronica Thurston, Abby Trottier, Ceci Tseng, Deb Van Arman, Jonathan Vincent, Priscilla Vincent, Lucinda Walker, Paige Wallis, Shannon Wallis, Suzie Wallis, Abby Walsh, Karen Ward, Laurie Welch, Marie Wesson, Linda Williams, Marcia D. Williams, Reeve Williams, Maureen Wilson.

NORWICH WOMEN'S CLUB

Community Service Since 1907

NOVEMBER 2013

The Faces of the Nearly New Sale

